



Recent trends in treated ESRD incidence by age and cause

B. Stengel, S. Billon, and the ERA-EDTA
Registry Staff, AMC, Amsterdam

On behalf of the ERA-EDTA Registry Committee

XXXVIII ERA-EDTA Congress, Vienna, June 24-27 2001



Background

- Incidence of treated ESRD increases steadily worldwide, but the growth in incidence rates varies considerably across countries
- These trends have been poorly quantified in Europe, over the last decade
- Differences in overall ESRD incidence might reflect wide variations in trends by age and cause across countries



Aim

- ◆ To quantify trends in the overall incidence of treated ESRD in Europe, over 1990-99
- ◆ To quantify trends by gender, age group, primary diagnosis, and by country
- ◆ To analyse the consequences for the demography and medical pattern of new ESRD patients in 1999

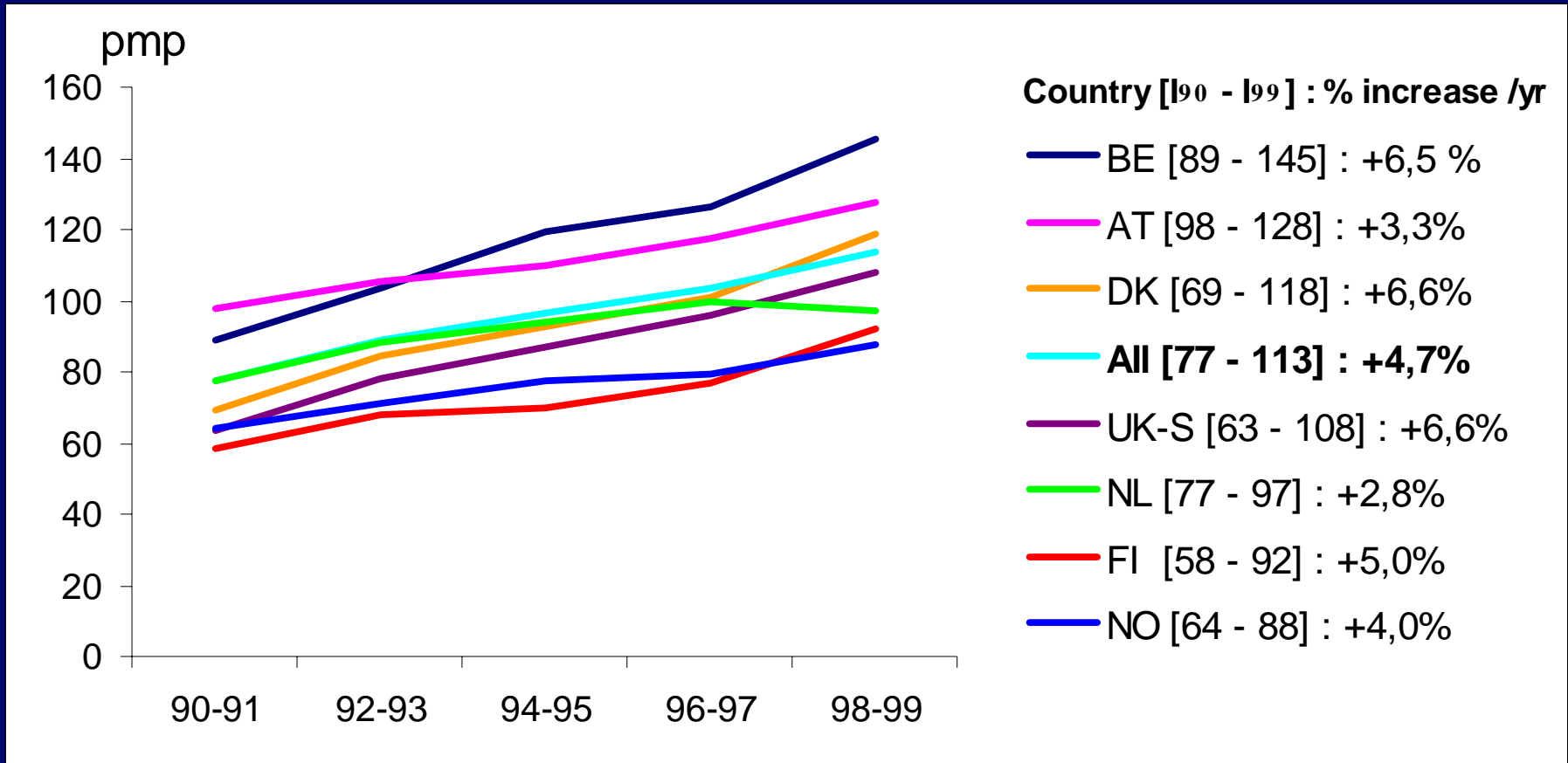


Methods

- 7 national registries : Austria (AT), Belgium (BE), Denmark (DK), Finland (FI), Norway (NO), Scotland (UK-S), The Netherlands (NL)
- Incidence rates studied by 2 year period and adjusted for age and gender with the European population in 1995 as the reference
- Mean annual change (%) in adjusted incidence rates estimated by Poisson regression



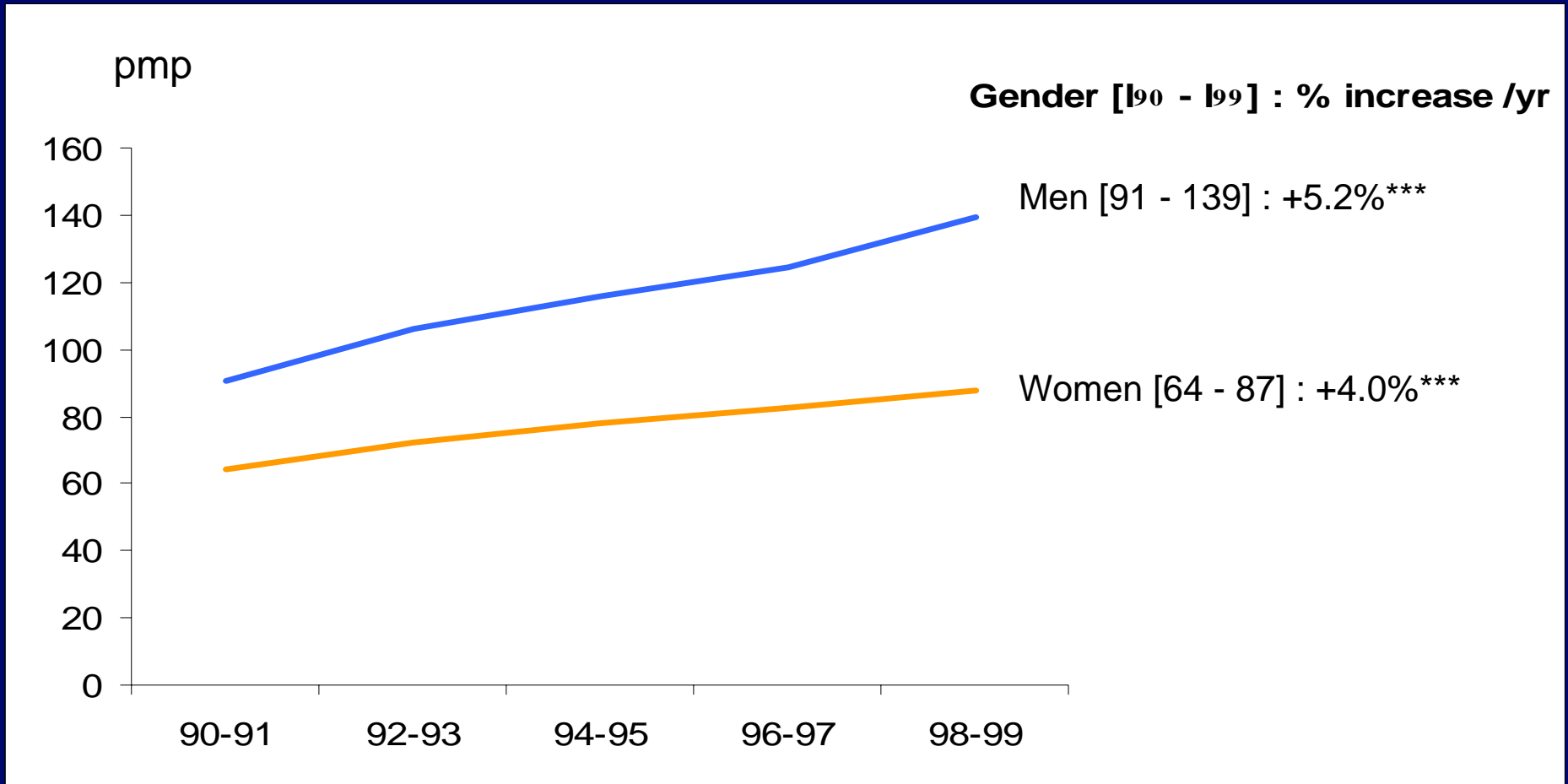
Adjusted incidence rates of treated ESRD and mean annual increase (%) by country, 1990-99



Adjusted for age and gender



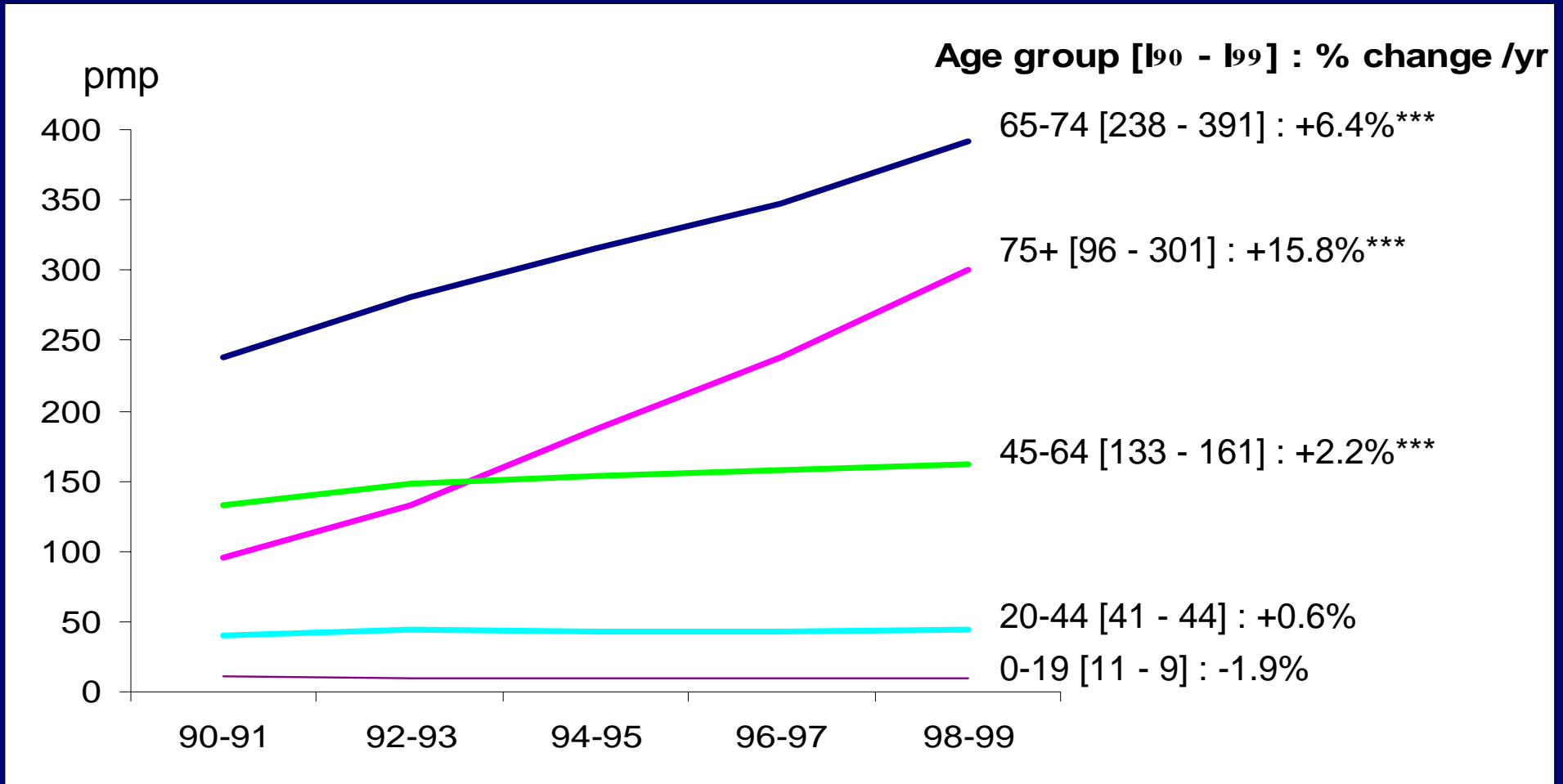
Adjusted incidence rates of treated ESRD and mean annual increase (%) by gender, 1990-99



Adjusted for age, ***: $P < .001$



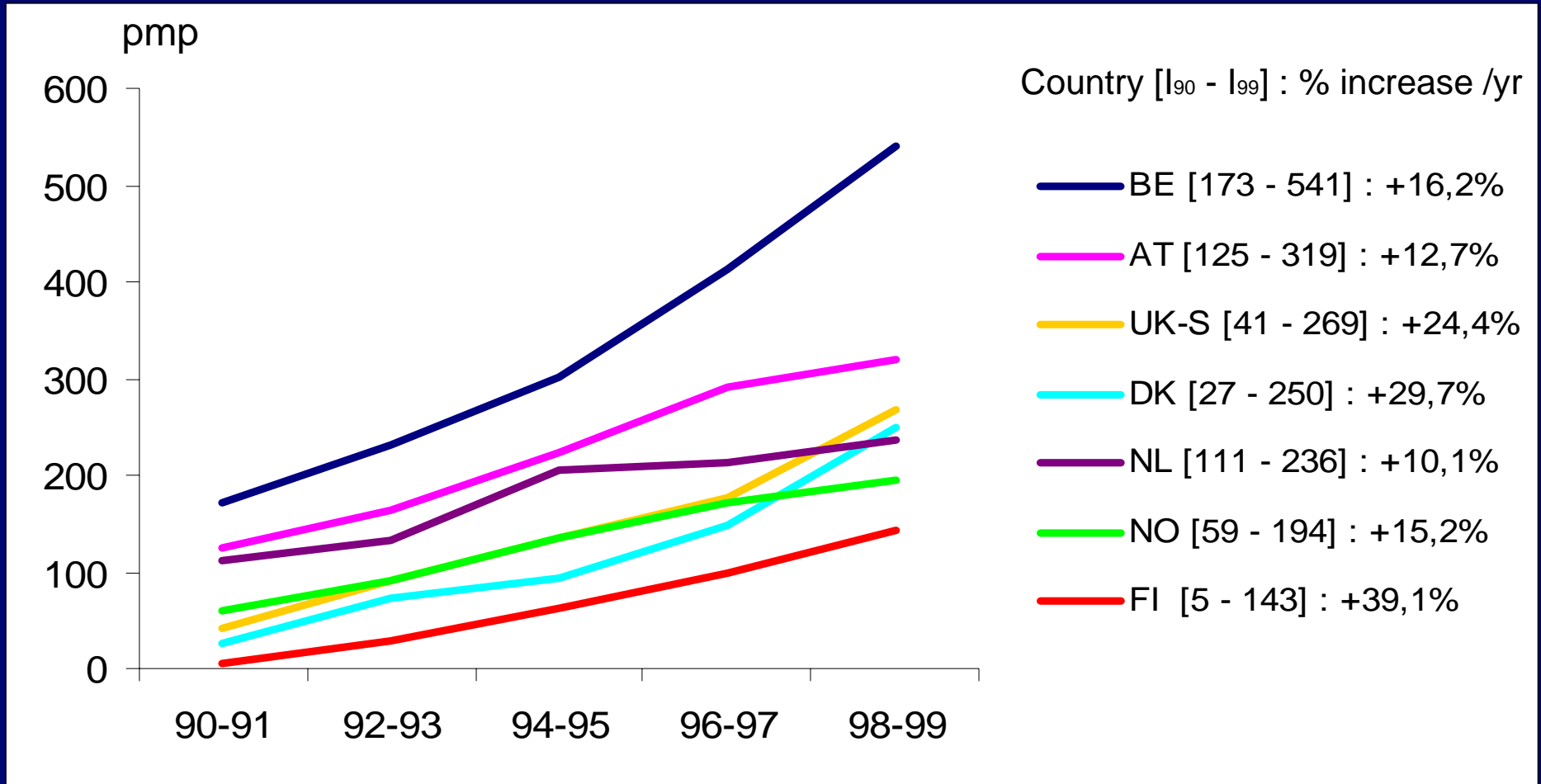
Adjusted incidence rates of treated ESRD and mean annual change (%) by age group, 1990-99



Adjusted for age and gender, ***: $P < .001$



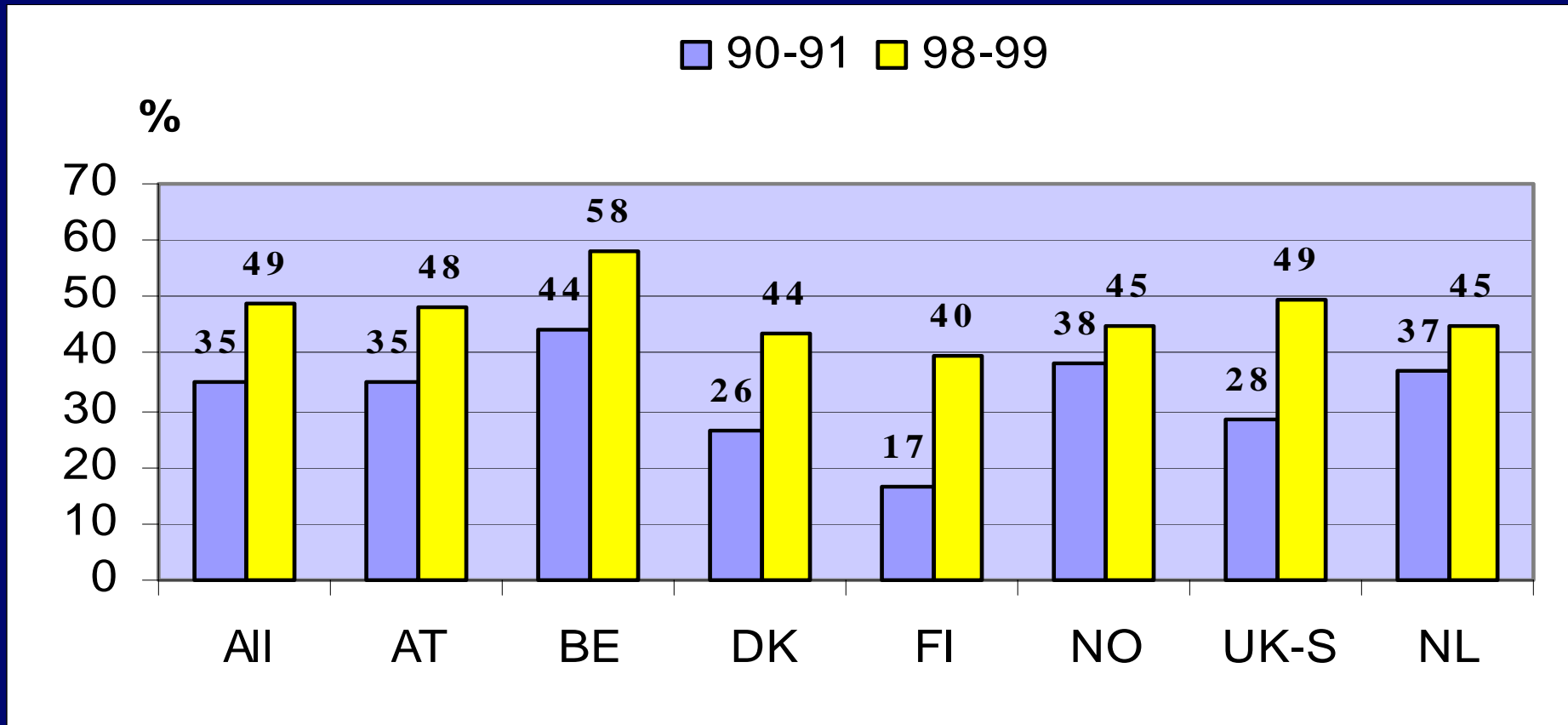
Incidence of treated ESRD and mean annual increase (%) in patients aged 75+ by country



Adjusted for age and gender, $P < .001$

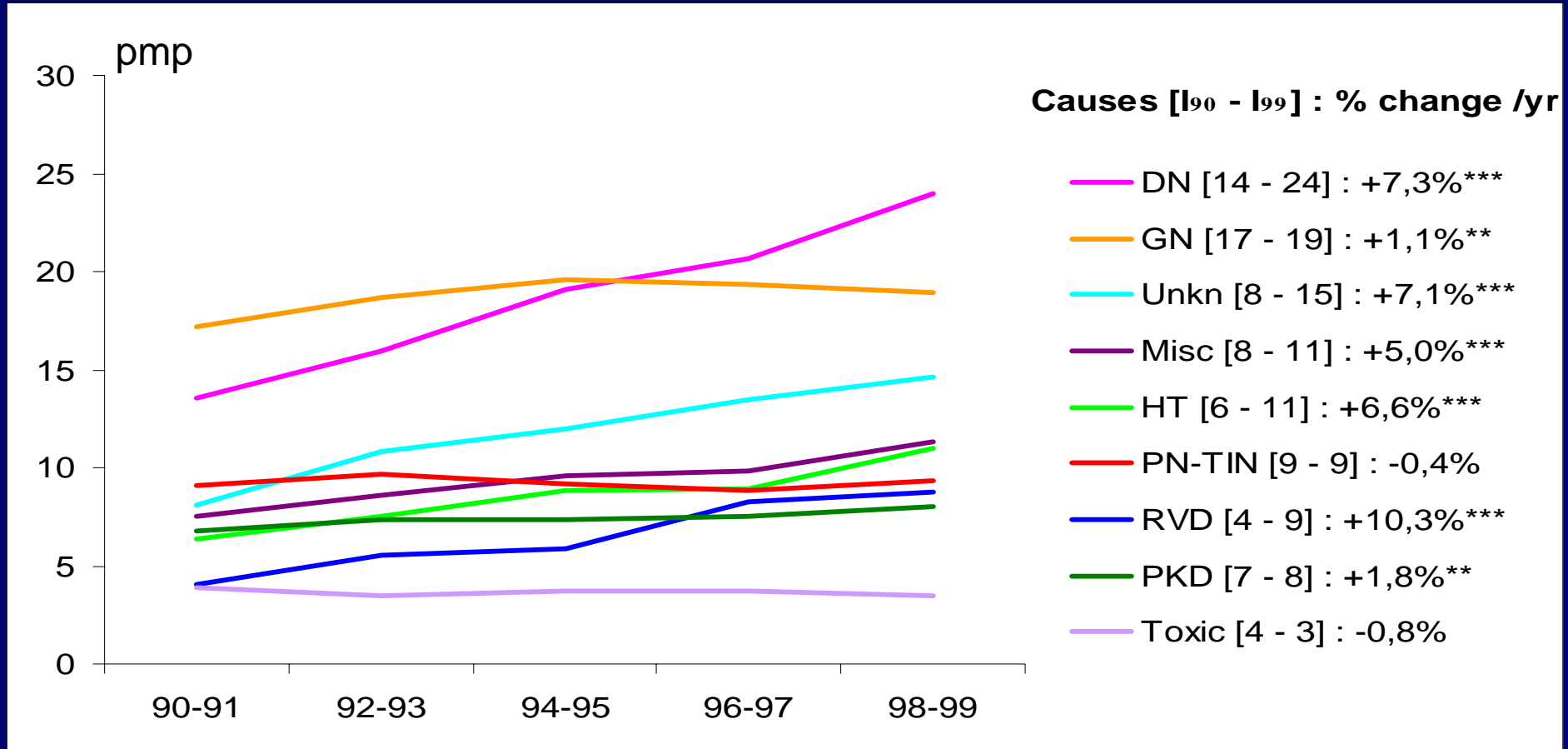


Changes in the percentage of new ESRD patients aged 65+ by country, 1990-99





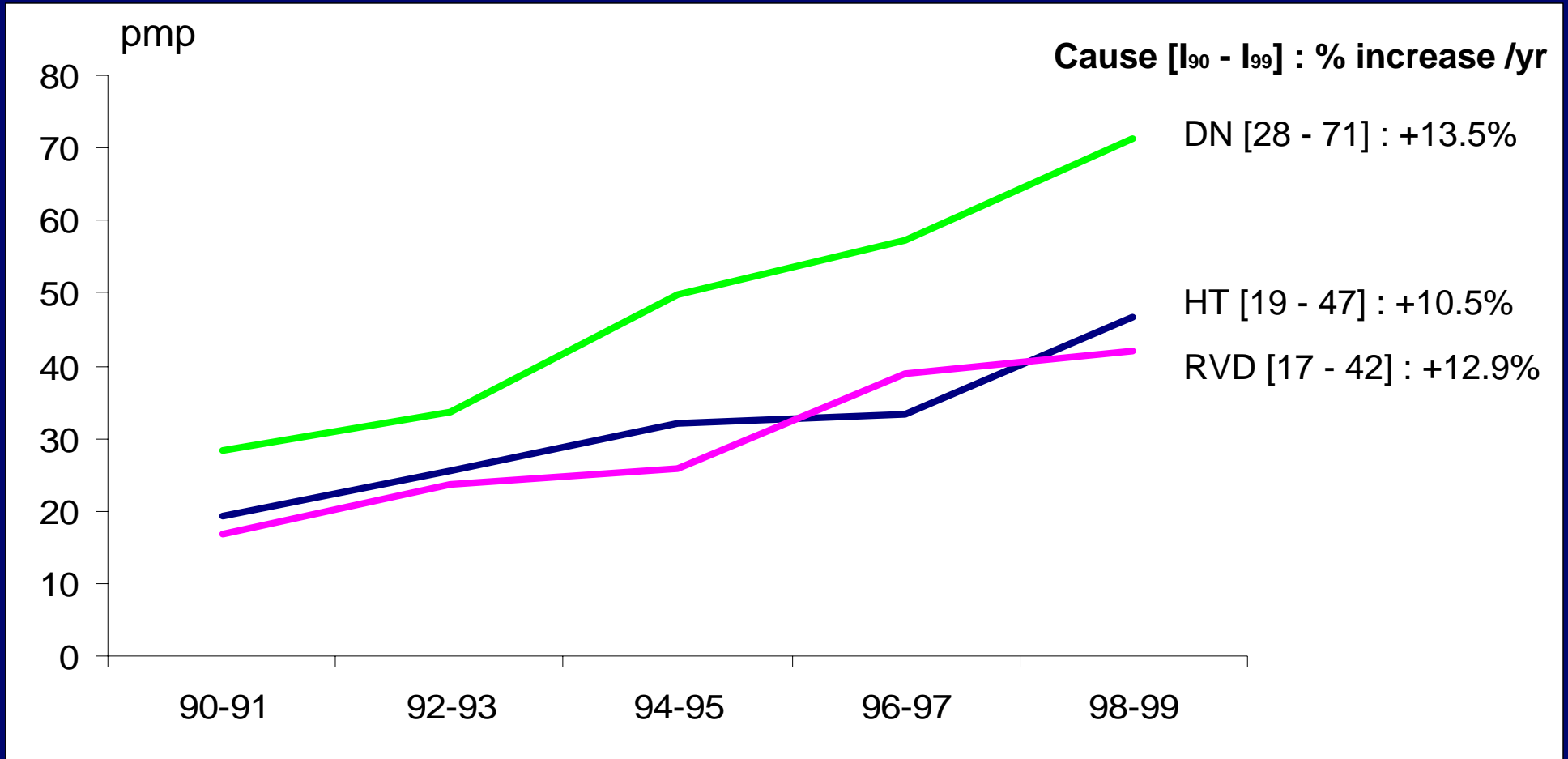
Adjusted incidence rates of treated ESRD and mean annual change (%) by cause, 1990-99



Adjusted for age and gender, ***: $P < .001$, **: $P < .01$

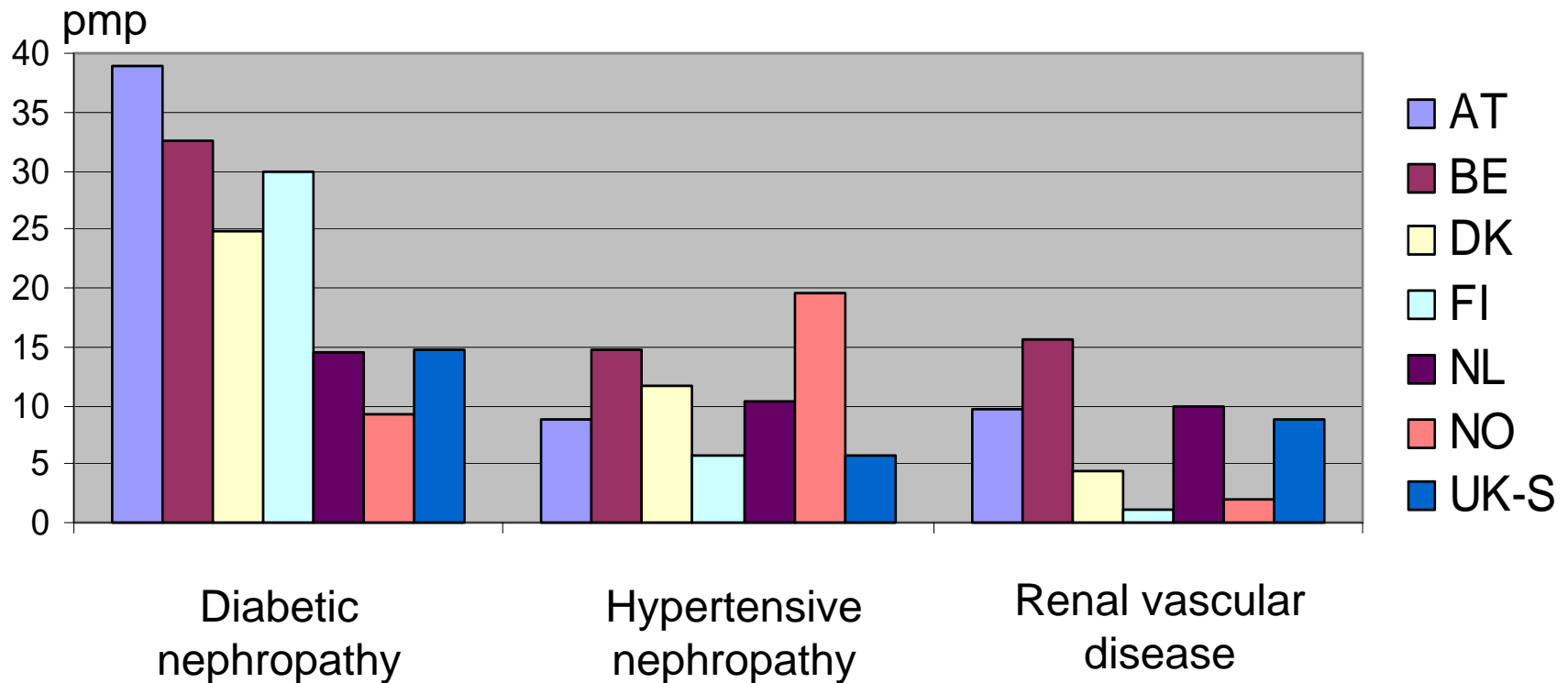


Trends in the incidence of treated ESRD due to diabetes, hypertension and renal vascular disease among patients aged 65+





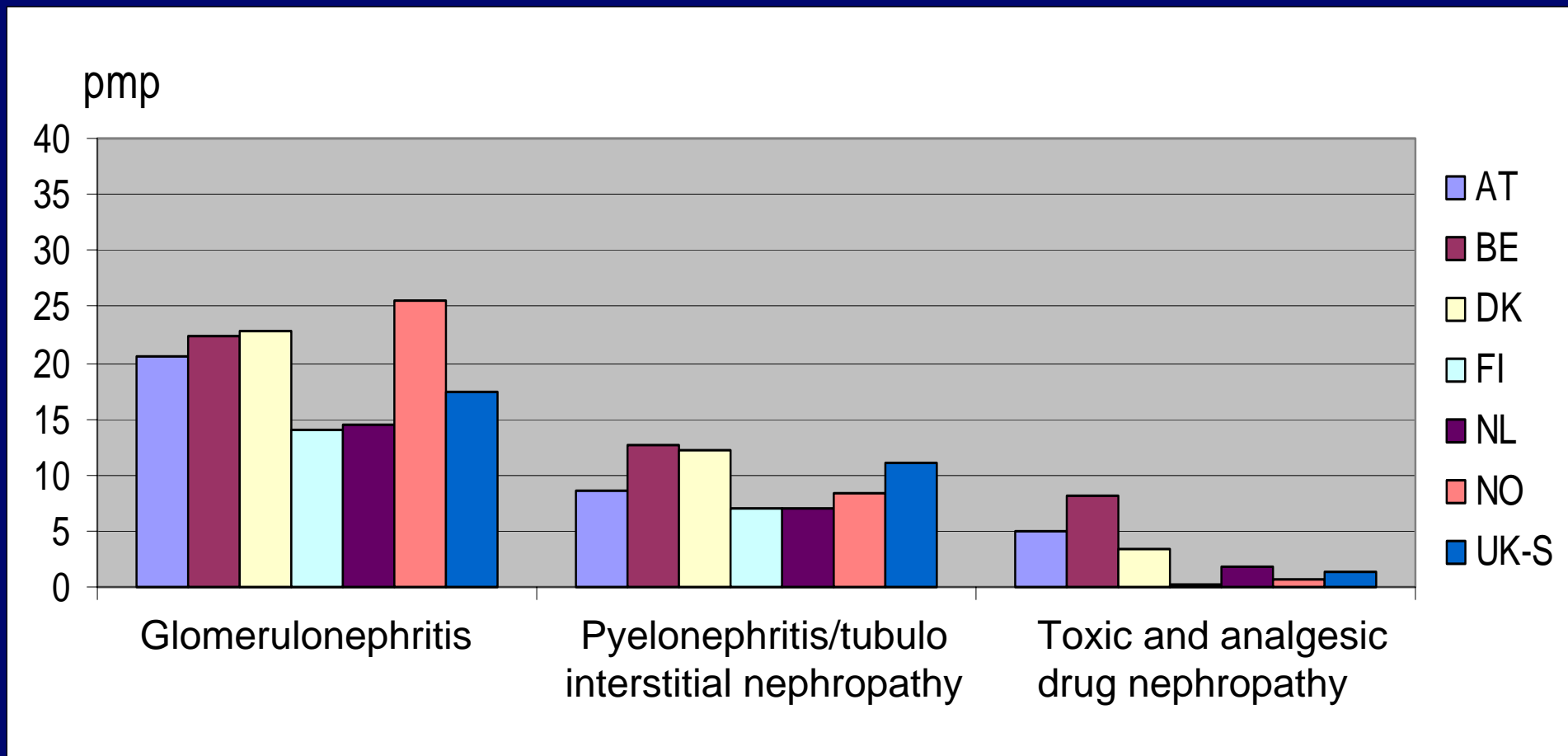
Adjusted incidence rates of selected causes of ESRD by country, in 1998-99



Adjusted for age and gender



Adjusted incidence rates of selected causes of ESRD by country, in 1998-99



Adjusted for age and gender



Conclusion (1)

During the period 1990-99

- Mean increase of treated ESRD incidence: 4.7%/yr
 - Linear trend except for The Netherlands
- Important changes in demography and diagnosis of new ESRD patients
 - Sex ratio (M/F) : 1.3 ---> 1.5
 - % of patients aged 65+ : 40% ---> 50%
 - % with either DN, HTN or RVD : 30% ---> 40%



Conclusion (2)

- Tendancy for larger range in the overall treated ESRD incidence across European countries
 - Wide variations in the acceptance of older patients partly explain this increasing difference
 - But, wide variations in the trends of diabetic and vascular nephropathies, also explain these differences, which is important in the view that these diseases might be preventable